

A chalkboard with two pieces of pink chalk and some white chalk markings. The chalkboard is green and has several white chalk lines and shapes drawn on it, including a large 'A' and some curved lines. The two pieces of pink chalk are lying on the board, one standing upright and one lying horizontally.

What turns you on?

An action research approach to identifying first year students' perspectives on engagement

Nick McGuigan and Kirsten MacDonald

Centre of Accounting Education and Research,
Lincoln University

Key Contacts

- **Nick McGuigan**



Nick McGuigan
BCom (Hons), CAT
Tutor Co-Ordinator
Accounting and Finance

Centre of Accounting Education
and Research
Commerce Building
PO Box 84, Lincoln University
Canterbury, New Zealand



Phone (W): 64-3-325 2811, extn 8453
Fax: 64-3-325 3847
Email: mcguigan@lincoln.ac.nz

- **Kirsten MacDonald**



Lincoln University
Te Whare Wānaka o Aoraki

Kirsten MacDonald
BCM, MCM

*Lecturer in Finance
Commerce Division*

www.lincoln.ac.nz

PO Box 84, Lincoln University
Lincoln 7647, Canterbury
New Zealand
Phone (W): 64-3-325 3838 extn 8834
Fax: 64-3-325 3847

macdonak@lincoln.ac.nz

Presentation Structure

- Action research model
- Course overview
- Reconnaissance
- Intervention
- Evaluation of Intervention
- Questions

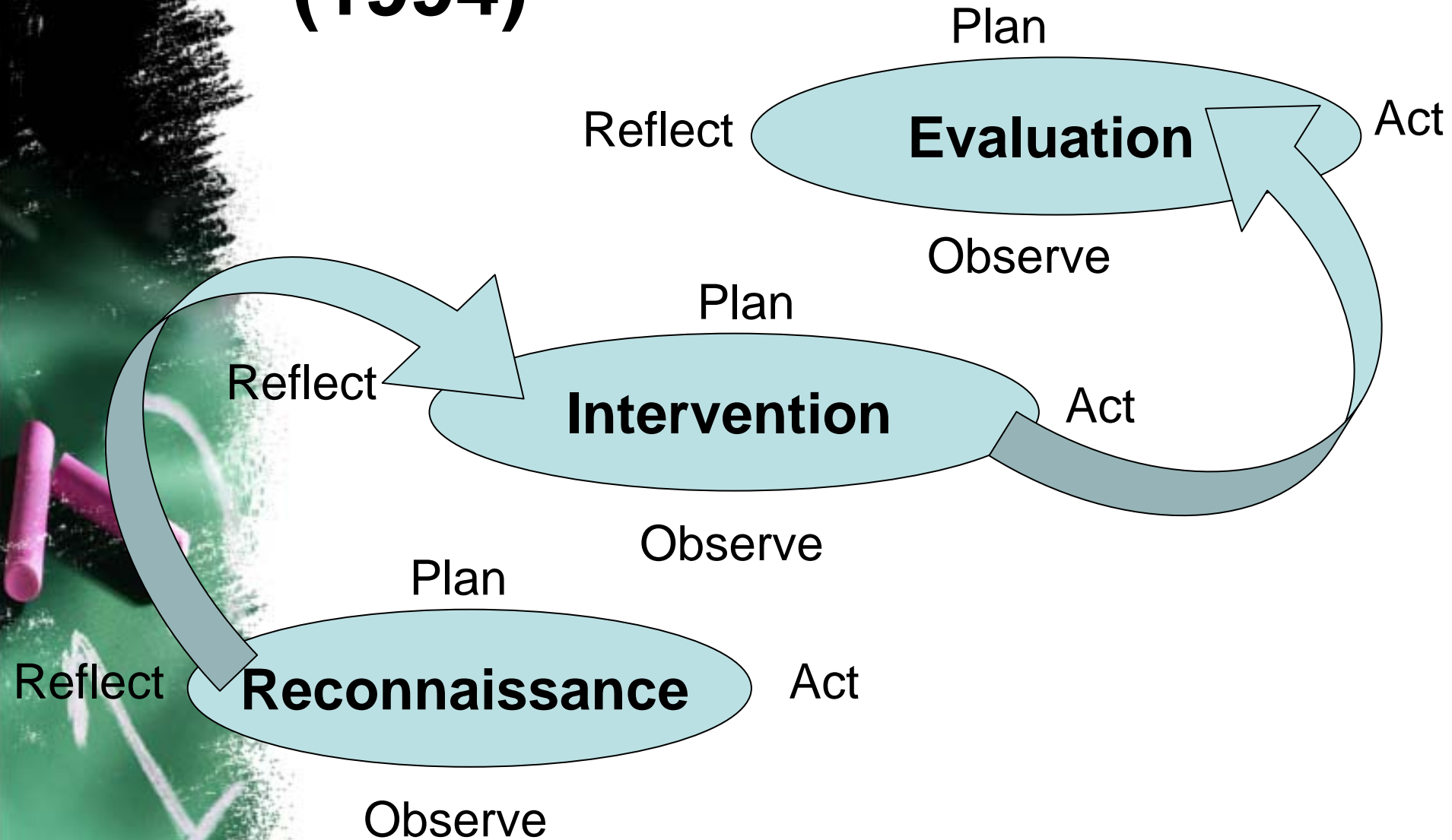


Action Research

Action research is a form of collective self-reflective inquiry undertaken by participants in social situations in order to improve ... their own educational practice, as well as their understanding of these practices and the situations in which these practices are carried out.

Kemmis and McTaggart, 1988

Cardno/Piggot-Irvine Model (1994)



The Course – Acct 102

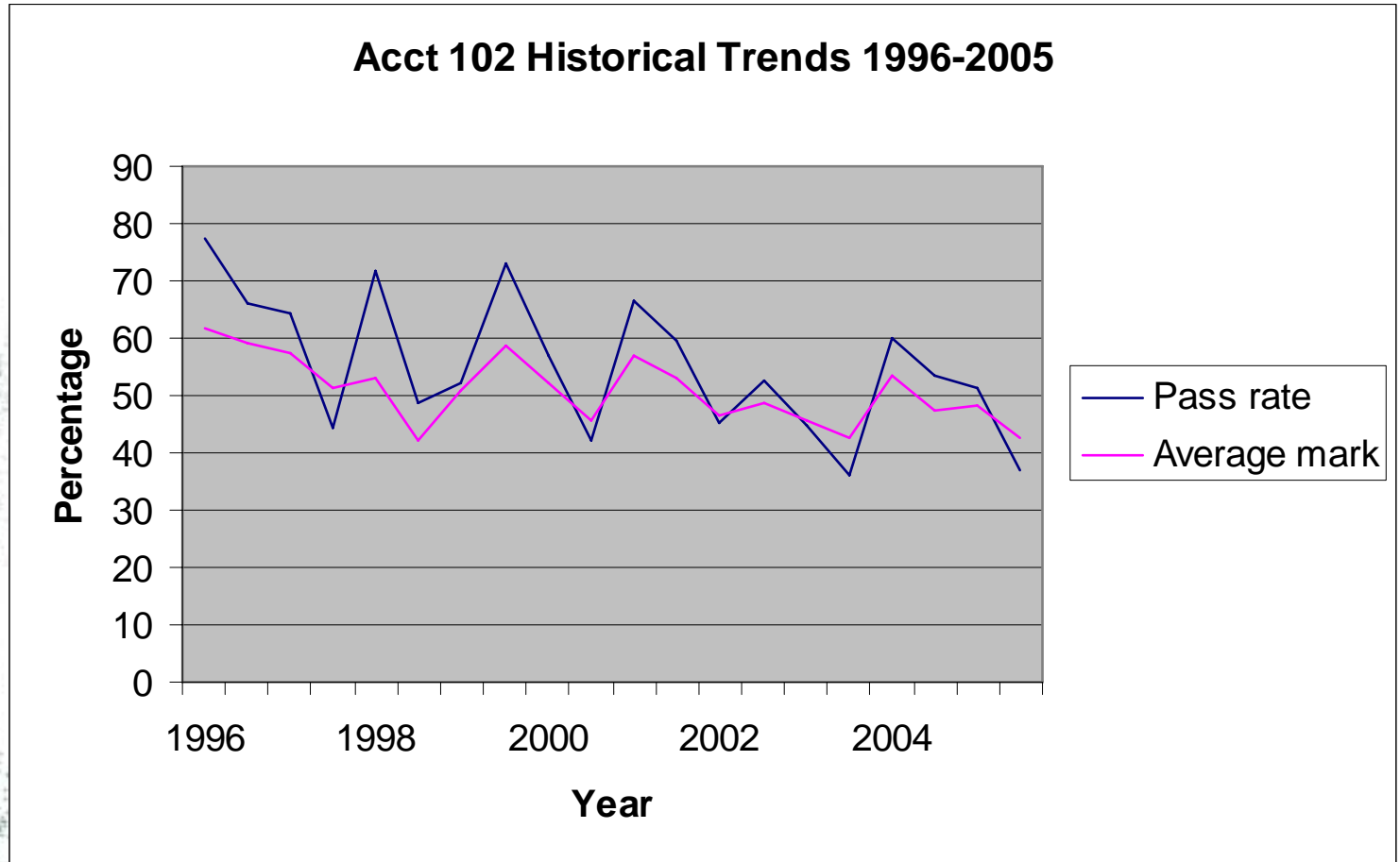
- Introductory Accounting and Finance for Business
- Compulsory Bachelor of Commerce Management
- Course aim
 - Decision user appreciation of financial reports
 - Understanding of the basic concepts underpinning the preparation and analysis of accounting reports
 - Application to the interpretation and management of accounting data
- Course is delivered three times per year

Student Composition

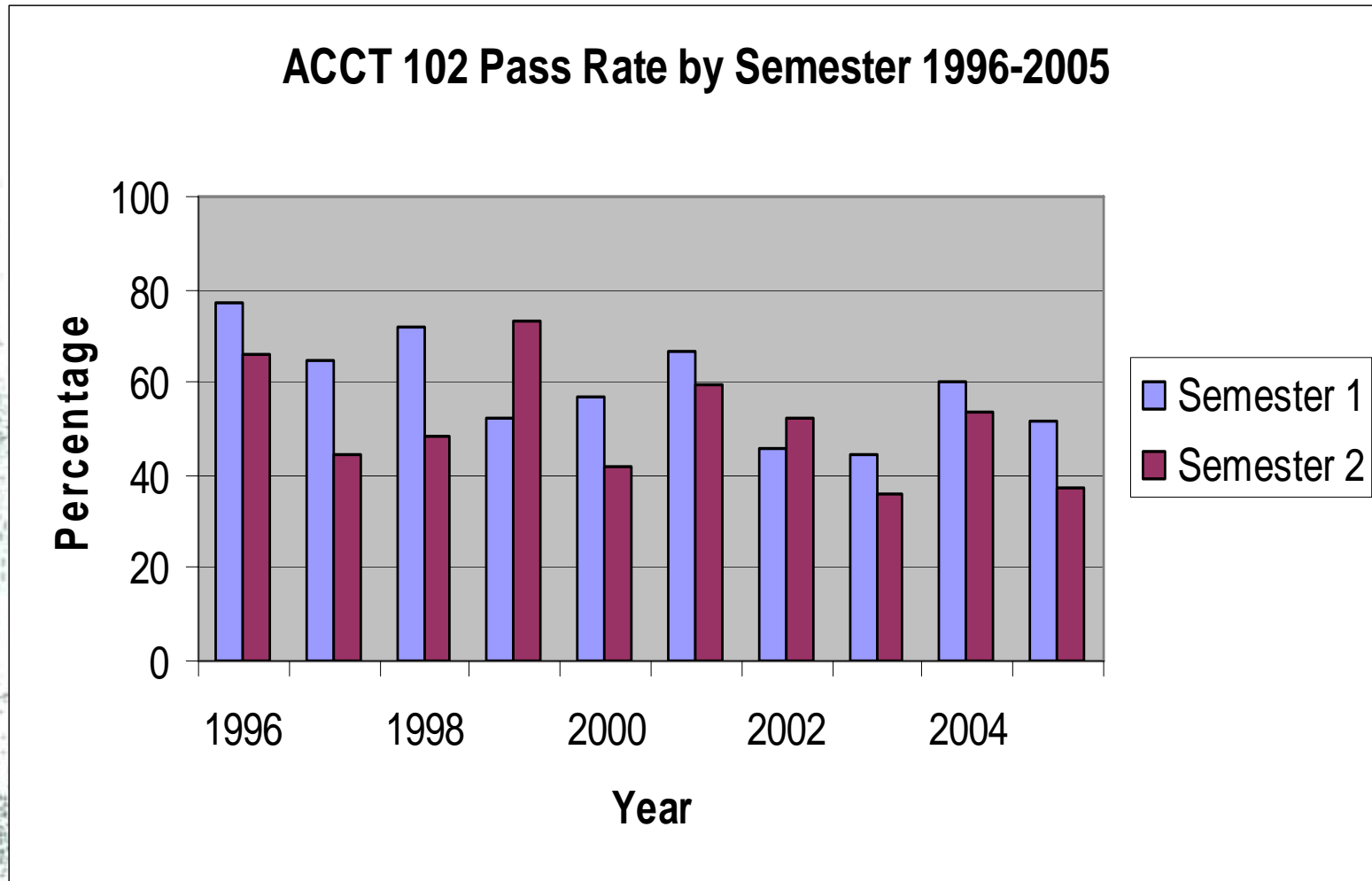
- 600 students enroll
- Roughly equal gender split
- Student composition
 - Agriculture and life science
 - Accounting major
 - International
- Generation Y
 - The student cohort currently emerging can be defined as an ... “independent, informal, innovative, assertive, technologically-minded collection of young individuals known as generation Y (Sheahan, 2005).



Reconnaissance

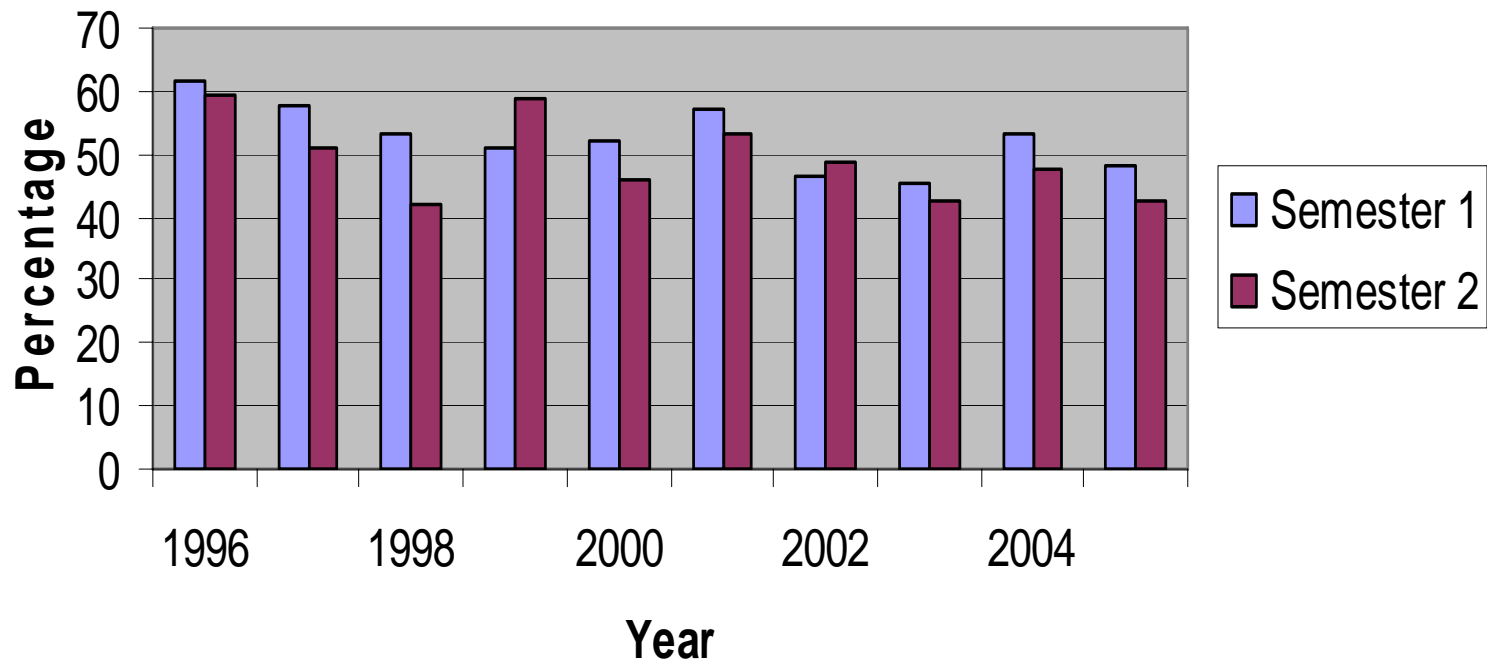


Reconnaissance



Reconnaissance

ACCT 102 Average Mark by Semester 1996-2005



Reconnaissance

Teaching Staff Observations

- “Heterogeneous chaos”
- “Hated it when they did it; wanted a set of notes 5 years later. One of those subjects that students can see little purpose in until they actually have to use it in real life.”



Reconnaissance

“It is tricky for the lecturer to
engage the students
with more
examples of the same
concepts
do well as the concepts
you can find concepts
easier to relate to
have now on our

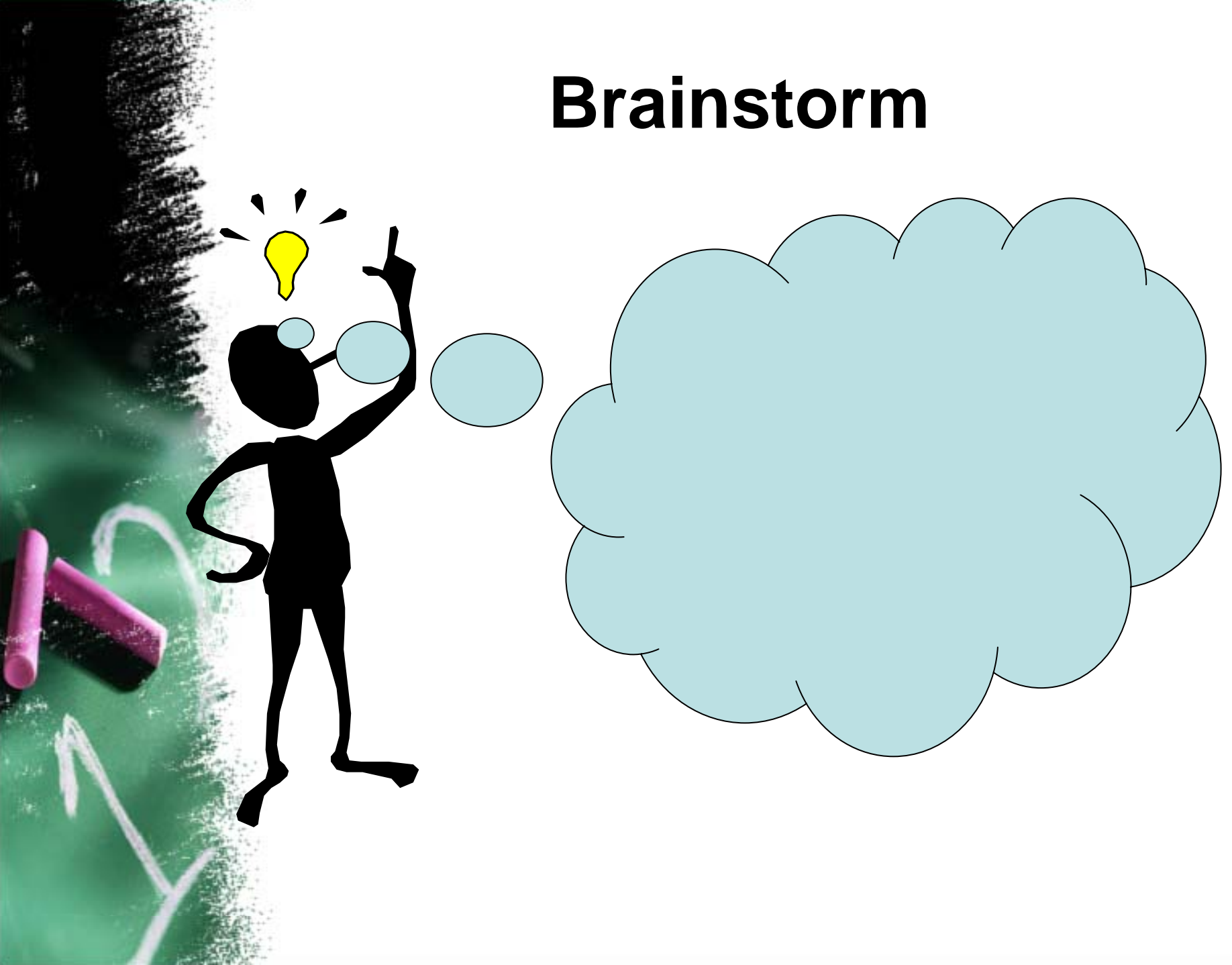


Our Identified Problem

How to Re-engage our students with their first year experience in Acct 102: Accounting and Finance for Business?



Brainstorm



Learning Relevant to our Students



Learning Relevant to our Students



The screenshot shows a Mozilla Firefox browser window displaying the Sorted.org.nz website. The page title is "Quick KiwiSaver calculator | Sorted - Mozilla Firefox". The address bar shows the URL "http://www.sorted.org.nz/calculators/kiwisaver-quick-calc/". The website header features a cartoon cat logo and the text "sorted.org.nz YOUR INDEPENDENT MONEY GUIDE". Navigation buttons include HOME, LIFE STAGES, CALCULATORS, and MY PLAN. A search bar is located below the navigation. The main content area is titled "Quick KiwiSaver calculator" and includes a breadcrumb trail: "Calculators > All Calculators > Kiwisaver > Quick KiwiSaver calculator". The calculator form has the following fields: "Annual salary or wages (before tax)" with a dollar sign and input field, "Frequency of pay" with a dropdown menu set to "Weekly", and "Age" with an input field. Below the form is a "Go to page:" section with links 1 and 2, and a "Calculate" button. A disclaimer text reads: "Prior to changing your personal finances as a result of this calculation we recommend you view our [disclaimer](#)." The left sidebar contains sections for "My Calculators" (No saved calculators), "Sort Me", "All Calculators" (with a Hide button), "Goals" (My Goals worksheet, Net worth, Goal machine), "Budgeting" (Budget), "Money Personality" (Money personality profiler, Kids' money personality profiler), "Saving" (Regular saving, Lump sum, Goal machine), and "Debt" (Get into debt). The right sidebar has a "Log in to My Plan" section with fields for "Email or username:" and "Password:", and a "Log in" button. The Windows taskbar at the bottom shows the Start button, several application icons, and the system tray with the time "4:21 p.m."

Brainstorm



Intervention

- Interactive Lectures
 - Teaching philosophy – active in nature
 - Experiential learning (Kolb, 1984; Sutherland, 1997)
 - Students participate in an interactive classroom environment (Biggs, 2003; Ramsden, 2003)
- Industry Perspective Workshops
 - Modeled on industry – decision making
 - Real business practice



Intervention



- StudyTXT
 - Innovation through mobile learning (Mellow, 2005)
 - Download accounting study messages directly to a mobile phone
 - Written by academic staff specifically for course
- Online Consultation Time
 - Lincoln campus located out of CBD
 - Staff support from any location
 - Synchronous recorded chat



ACCT102 - Accounting and Finance for Business

Jump to...

- Lincoln University Website
- Lincoln University Library
- myLincoln Intranet
- Study Help
- myRecord Self-Service
- itHelp Website

myLincoln > ACCT102 > Chats > Kirsten's E-Office Hours - Wednesday's 2.30-3.30 > Chat sessions

Wednesday, 30 May 2007, 02:31 PM --> Wednesday, 30 May 2007, 03:37 PM

- 14:31: Kirsten Macdonald has just entered this chat
- 14:32 Kirsten: Hi everyone. Please makes sure you hit the "beep" button next to my name so I know you are there asking questions 😊
- 14:37: Weimeng Sun has just entered this chat
- 14:38 Weimeng: which formula will be given in the final exam
- 14:38: Stephen Peter Blain has just entered this chat
- 14:41 Stephen Peter: We are examined on the section Jamal taught aren't we?
- 14:41 Kirsten: Hi Weimeng, please see Nick's notice from this morning. All financial formulae for my section of the course will be provided as shown on the formulae sheet on the previous exams.
- 14:42 Kirsten: Hi Stephen, please also see Nick's notice. The exam will only cover the course material from after the holiday break.
- 14:43 Stephen Peter: Hi yeah i read that it just sounded very strange, good though
- 14:43 Kirsten: Pleased you're happy 😊
- 14:45: Alisha Sonja Brorens has just entered this chat



Intervention

- Discussion Forums
 - Frequently asked questions
 - Social forum
 - Emailed discussion forum messages
- Work Portfolios
 - 4 pieces of work submitted in a portfolio style
 - Each part comprises of 3 weeks worth of lectures
 - Opportunity for students to build on their knowledge

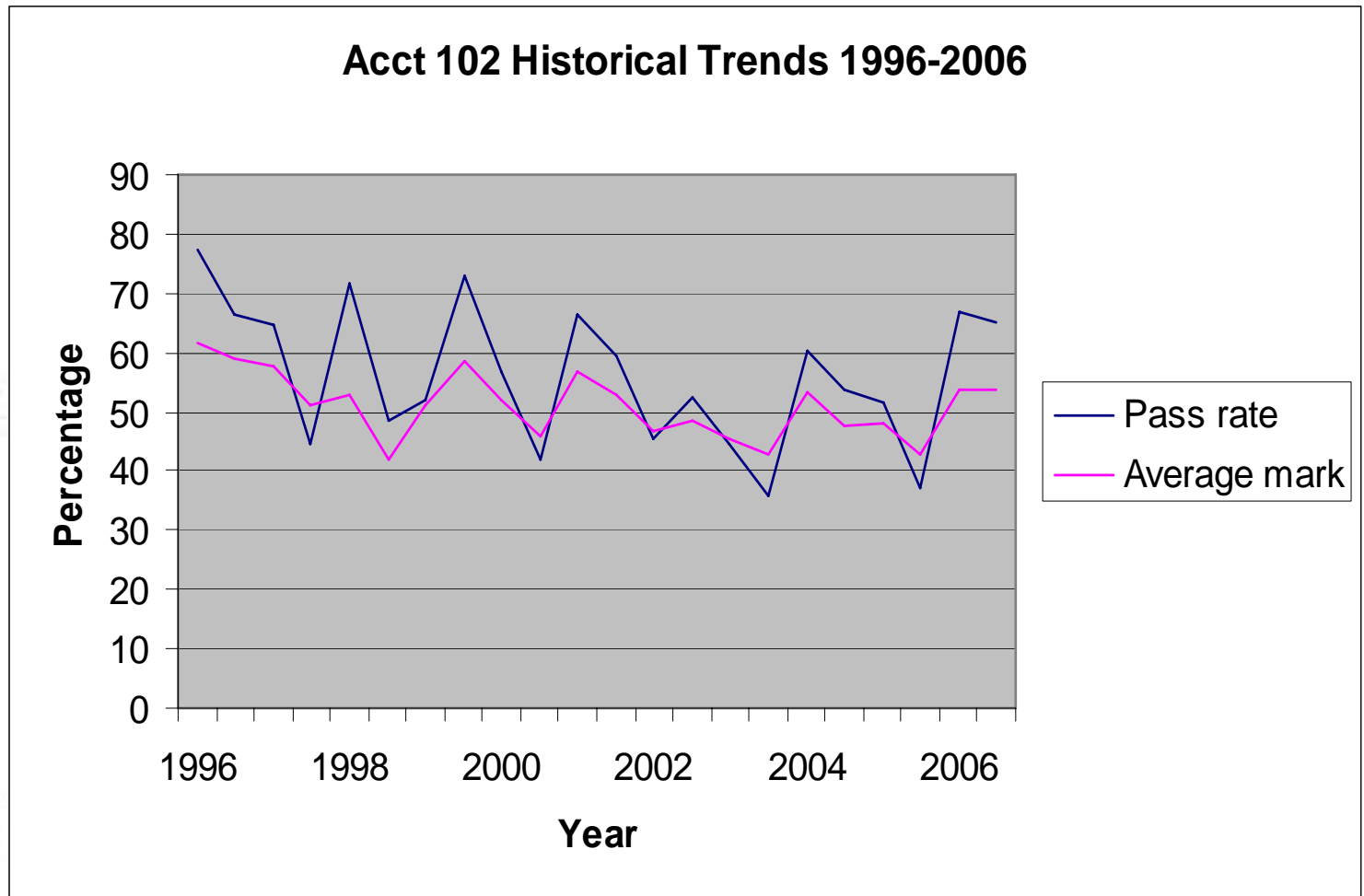
Intelligent Tutoring System



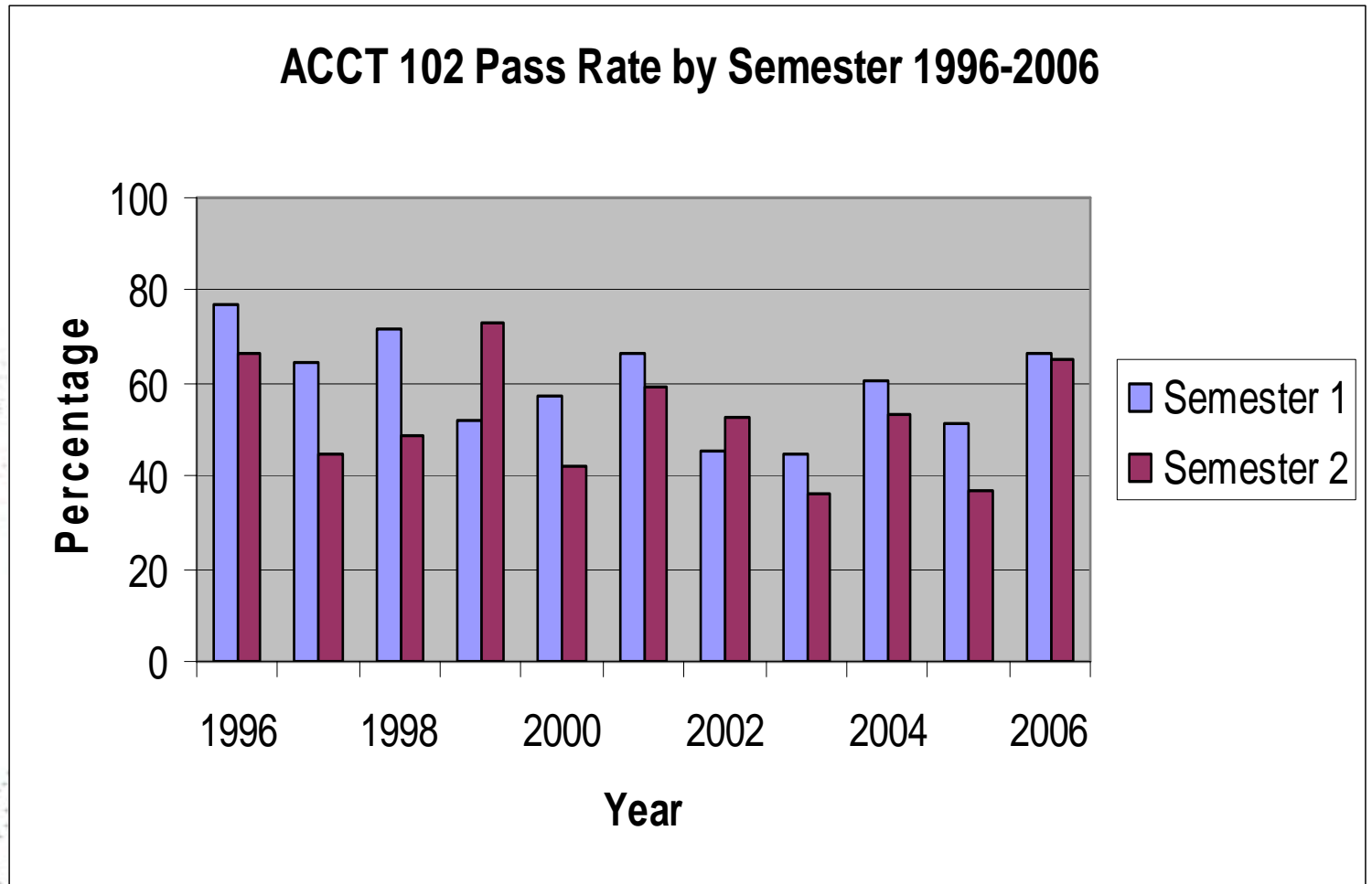
Evaluation of Intervention

A portfolio of appropriate
enhancing experiences with
supervisors and colleagues
Conducting research
helps in understanding
Make a portfolio of work
is required to be a study
handwritten notes
marking review of work
fits assessment with
assessment with understanding
both this work
entire study
entire study
entire study

Evaluation of Intervention

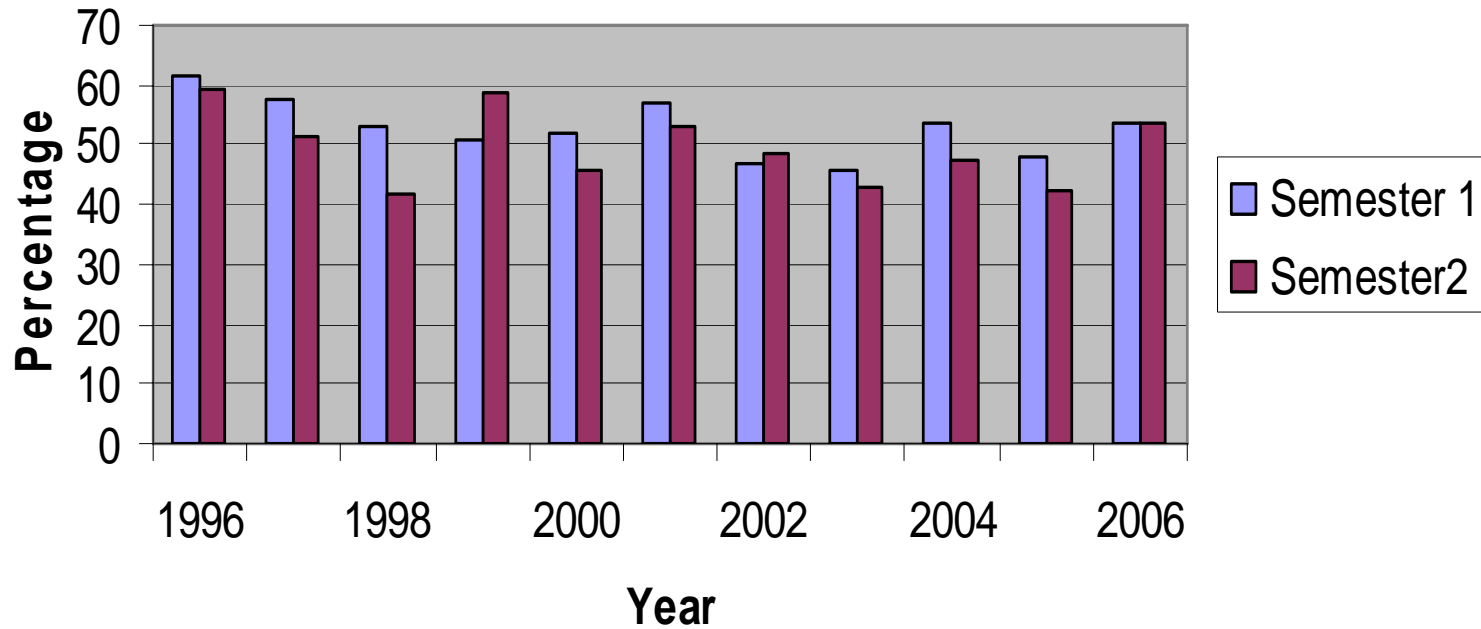


Evaluation of Intervention



Evaluation of Intervention

ACCT 102 Average Mark by Semester 1996-2006



Where to Next

- Repeat initial study collecting data through cycles of student cohorts
 - Semester 1 and 2 2007
 - Summer School 2008
- Focus groups
- Statistical analysis of course feedback
- Refine our Study
 - Support offered in the course